

## CHEMICAL & PROCESS TANK OFFLOADING INSTRUCTIONS

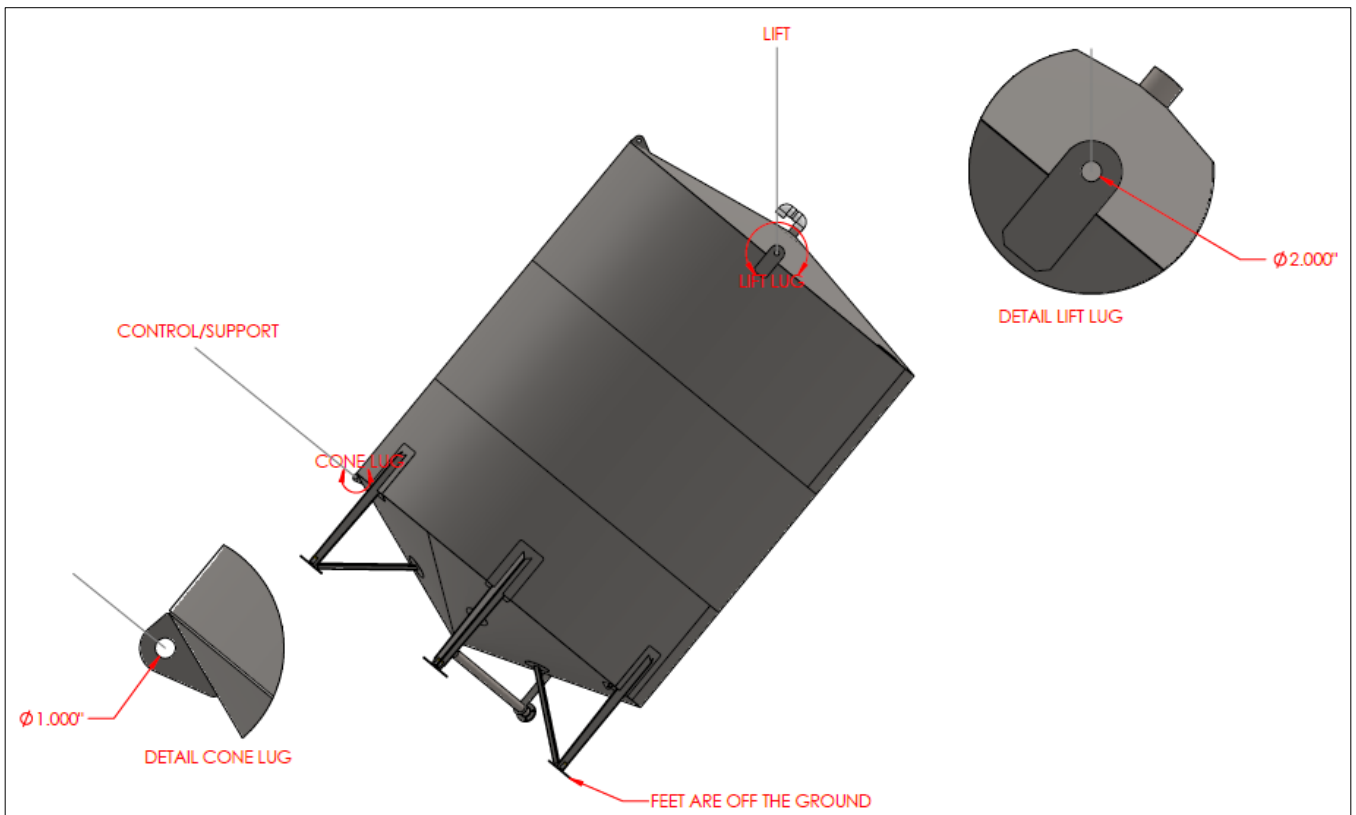
When offloading and standing up a tank, use designed lift lugs and do not use legs/footpads as a pivot point. Legs/footpads are not to be used as support to stand the tank.

### CHEMICAL TANKS

- There is one cone lug that can be used to lift/lower and control the cone end down upon erecting a tank to keep the footpads in the air until the tank is set in place.

### PROCESS TANKS

- There are three cone lugs that can be used to lift/lower and control the cone end down upon erecting a tank to keep the footpads in the air until the tank is set in place.



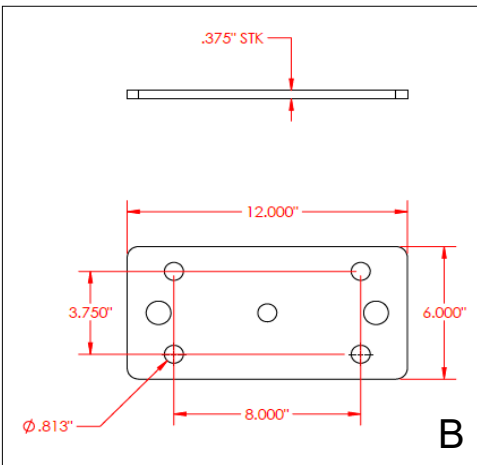
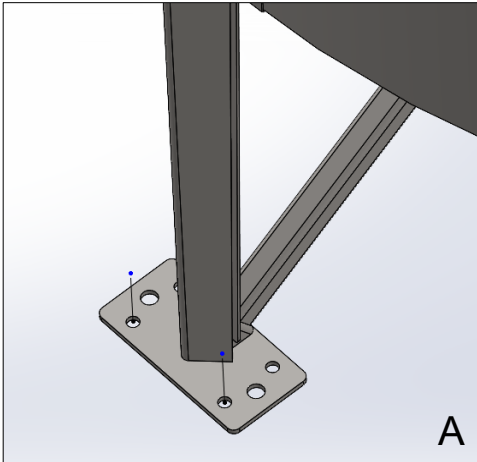


# Novid<sup>®</sup>

INC.

## BUILT TO ENDURE

### LEVELING, SECURING AND INSTALLATION INSTRUCTIONS



1. Tank must be level and on an engineered concrete pad.
2. All footpads must be within 3/16" (4.78mm) level from footpad to opposite footpad. See Diagram C.
3. Use shims for leveling tank. Shim size must fit between bolt holes. See Diagram B.
4. Tank footpads must be properly secured with a minimum of two 3/4-inch fasteners per pad and secured in the locations provided – top holes on either side of footpad. See Diagram A.
5. Use Teflon tape on all the threaded connections and apply a compound paste on top of the Teflon tape.
6. It is recommended to use stainless steel fasteners/bolts and apply anti-seize compound.
7. For any questions consult an engineering firm.

